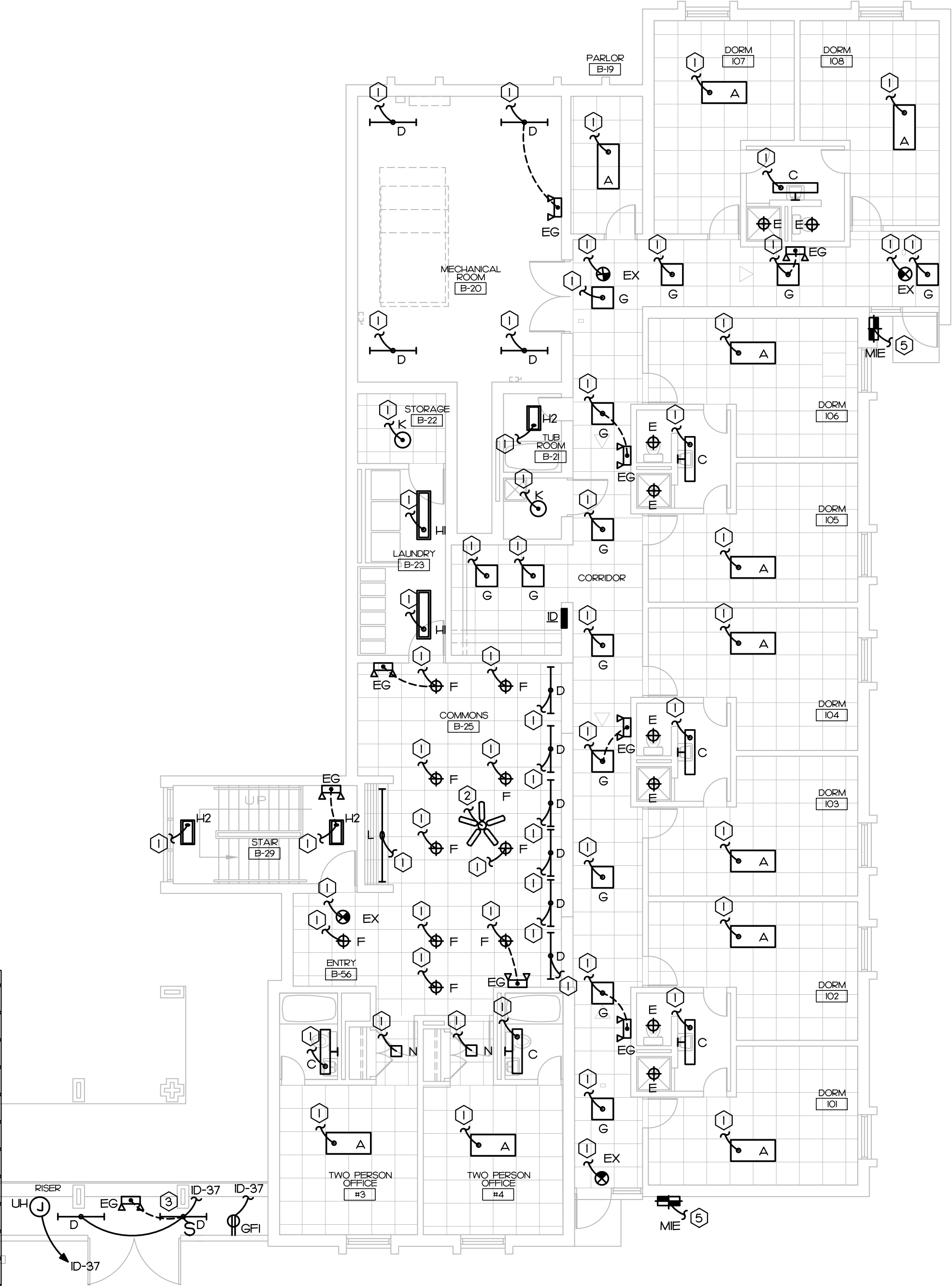
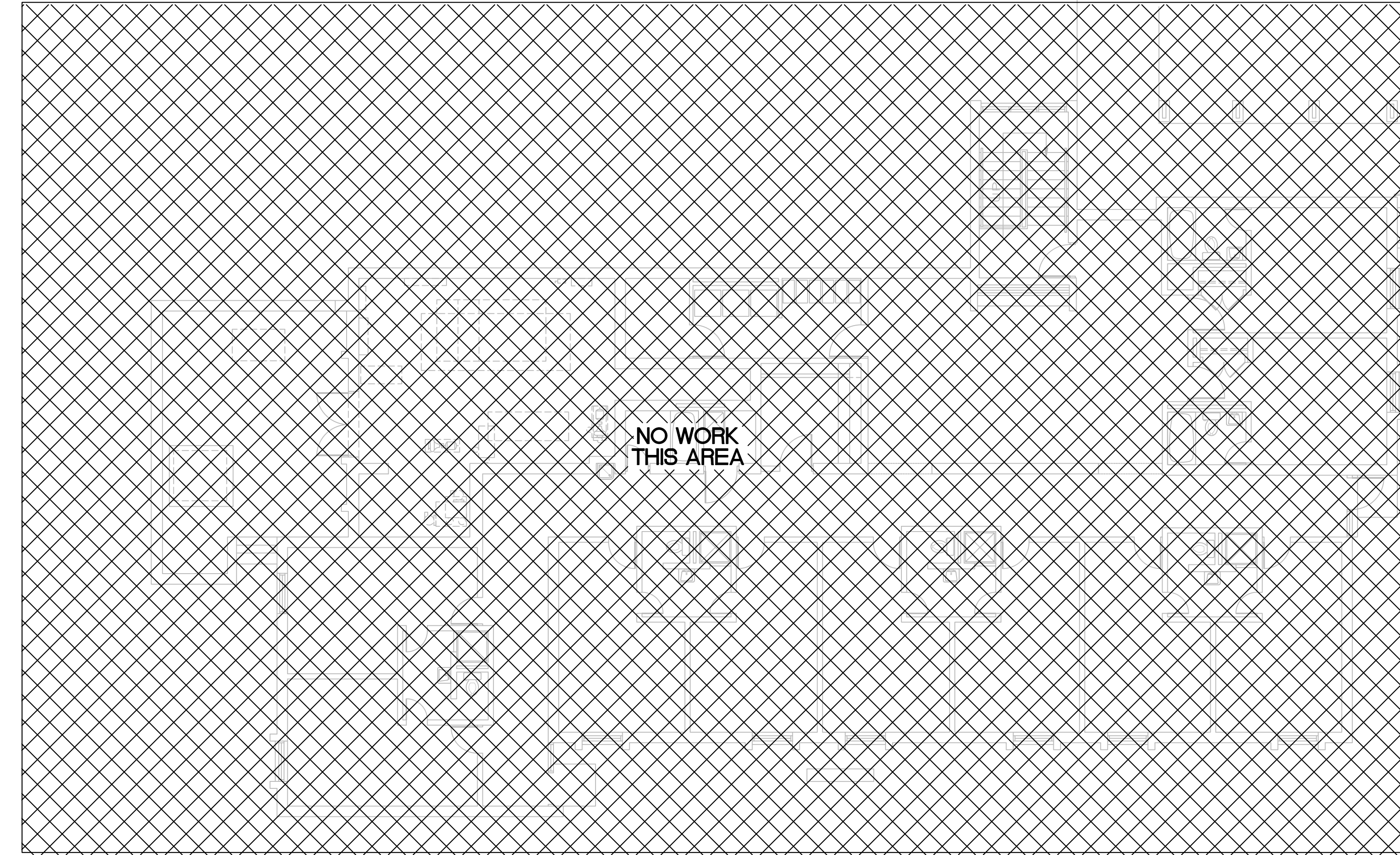


KEY NOTES

1. CONNECT NEW FIXTURE TO EXISTING LIGHTING AND SWITCHING CIRCUIT IN THIS AREA AVAILABLE FROM DEMOLITION.
2. EXISTING FAN TO BE REINSTALLED IN EXISTING LOCATION AFTER DEMOLITION. CONNECT TO EXISTING POWER AND SWITCHING CIRCUITS.
3. NEW LIGHTS, SWITCH, AND POWER CONNECTIONS FOR UNIT HEATER. THESE WILL BE CONNECTED TO NEW CIRCUITS IN AN EXISTING PANEL.
4. CONNECTION FOR NEW HOT BOX HEATER. SEE CIVIL PLAN FOR EXACT LOCATON. THIS WILL BE CONNECTED TO A NEW CIRCUIT IN AN EXISTING PANEL.
5. FIXTURE TO BE CONNECTED TO EXISTING EXTERIOR LIGHTING CIRCUIT. CONNECT BATTERY BACKUP CONTROL AHEAD OF INTEGRAL PHOTOCELL CONTROL.

NOTES:

1. THE CEILING AREA IN THE HALLWAY AND COMMON SPACES OPEN TO THE HALLWAY WILL BE 1-HOUR RATED. TENTING AND PROTECTION OF THE LIGHT FIXTURES IN THESE AREAS WILL BE THE RESPONSIBILITY OF THE GENERAL CONTRACTOR.




LIGHTING PLAN - BUILDING D1

SCALE: 1/8" = 1'-0"

1

4
HOTBOX
ID-39



3221 BLUE RIDGE ROAD, STE. 113
RALEIGH, NC 27612
P: 919.571.1111

www.imegcorp.com

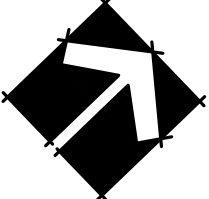
IMEG RESERVES PROPRIETARY RIGHTS, INCLUDING COPYRIGHTS, TO THIS DRAWING AND THE DATA SHOWN THEREON. SAID DRAWING AND/OR DATA ARE THE EXCLUSIVE PROPERTY OF IMEG AND SHALL NOT BE USED OR REPRODUCED FOR ANY OTHER PROJECT WITHOUT THE EXPRESS WRITTEN APPROVAL AND PARTICIPATION OF IMEG.
©2024 IMEG CONSULTANTS CORP.
North Carolina Design Registration #F-1507

0123

REF. SCALE IN INCHES

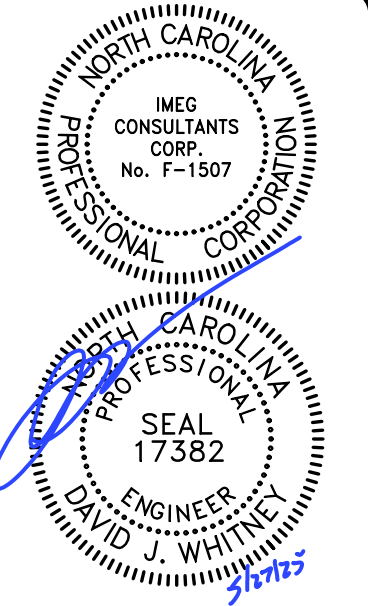
0123

PROJECT # 24048



24048

REVISIONS	5/27/25		
	FOR CONSTRUCTION		



ATLANTEC

ENGINEERS, PA

IMEG

3221 BLUE RIDGE ROAD, STE. 113
RALEIGH, NC 27612
P: 919.571.1111

PREPARED FOR:
NC DEPARTMENT
OF INSTRUCTION
SCO #
24-27792-01A

GOVERNOR MOREHEAD SCHOOL
SPRINKLER, ADA TOILET, LIGHTING
UPGRADES FOR DORMS A, B, + D
RALEIGH, NC

CONTENTS:
BUILDING D FIRST
FLOOR ELECTRICAL
PLAN

DATE:
May 27, 2025

DESIGNER: SWM
ENGINEER: DJW

SHEET NO.
E-103
OF